

Digital Photo Printer Driver

**DS40/ DS80/ DS-RX1/
DS620/620A and Duplex
for Mac OS**

Installation Instructions

Please read this installation guide thoroughly prior to running the installer on your system.

Acknowledgments

The Information contained in this document represents the current view of DNP IMS America Corp. on the issues discussed as of the date of publication. Because DNP IMS America Corp. must respond to changing world market conditions, it should not be interpreted to be a commitment on the part of DNP IMS America Corp. DNP IMS America Corp. cannot guarantee the accuracy of any information presented after the date of publication.

This document is for informational purposes only.

DNP IMS America Corp. MAKES NO WARRANTIES, EXPRESSED or IMPLIED, AS TO THE INFORMATION IN THIS DOCUMENT.

Complying with all applicable copyright laws is the responsibility of the user. Without limiting the rights under copyright, no part of this document may be reproduced, stored in or introduced into a retrieval system, or transmitted in any form or by any means (electronic, mechanical, photocopying, recording, or otherwise), or for any purpose, without the express written permission of DNP IMS America Corp.

DNP IMS America Corp. may have patents, patent applications, trademarks, copyrights, or other intellectual property rights covering subject matter in this document. Except as expressly provided in any written license agreement from DNP IMS America Corp., the furnishing of this document does not give you any license to these patents, trademarks, copyrights, or other intellectual property.


DNP IMS America Corp. • PO Box 787 • San Marcos, TX 78667 • USA
© 2000-2015 DNP IMS America Corp. All rights reserved.

The DNP DS40, DS80, DS620/620A and RX1 driver will provide printing functionality similar to the Microsoft printer driver.

The following OS versions and processor architectures are supported:


Mac OS 10.10 (Yosemite)

Mac OS 10.9 (Mavericks)

 **Mac OS 10.8 (Mountain Lion)**

Mac OS 10.7 (Lion)


All executable modules should be 64-bit Intel binaries & support


 Intel 64-bit processor architecture (x86_64)

Note

i386 is not supported by Mac OS 10.7+.

binary with fixes for 10.6 and above.

 **Mac OS 10.6.8 (Snow Leopard)**

 All executable modules should be 32/64-bit Intel binaries & support

Intel 32-bit processor architecture (i386)

Intel 64-bit processor architecture (x86_64)

Purpose

This document includes instructions for installing the printer drivers for DS40/DS80/RX1/620/620A printers on Mac OS X.



Attention

Before You Begin:

If the printer is connected to your computer, make sure it is turned OFF.

Go to **System Preferences > Print & Scan**. If a DNP series printer is listed, delete it.

1. Double click the **DNPOSXDrivers.dmg** to mount the virtual drive.



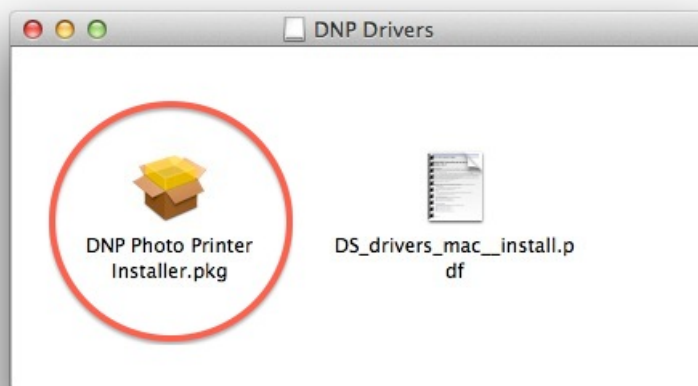
DNPOSXDrivers.dmg

2. A DNP Drivers icon/drive will appear on the desktop. Double-click the drive icon.

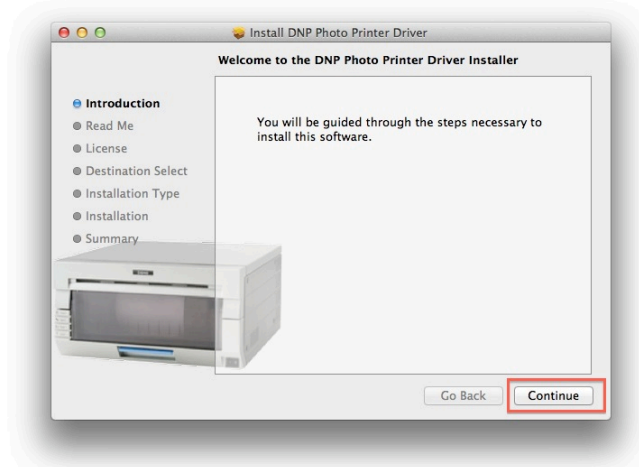


DNP Drivers

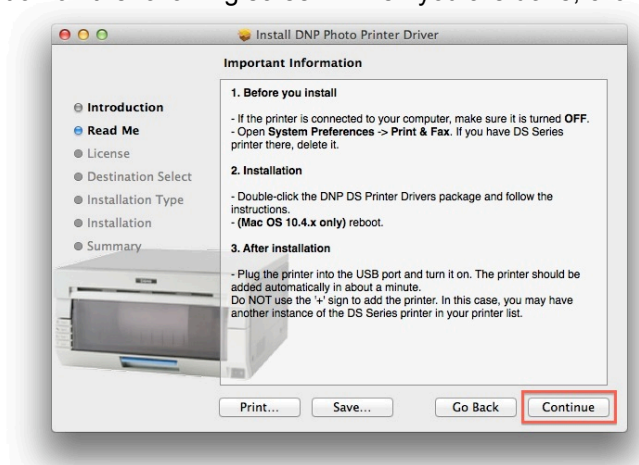
3. A window will open. Double-click the **DNP Photo Printer Installer.pkg** file.



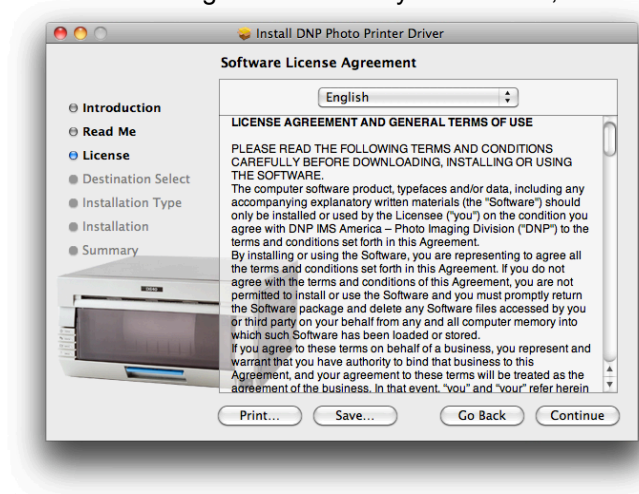
5 The installer will begin. Click **Continue**.



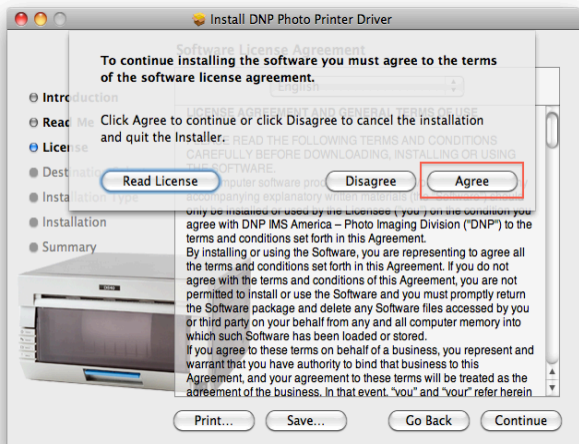
6. Read the important information on the following screen. When you are done, click **Continue**.



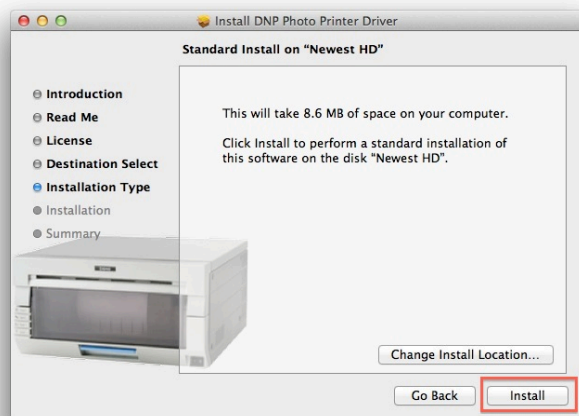
7. Read the License Agreement on the following screen. When you are done, click **Continue**.



8. You will be prompted to accept the license agreement terms. Click **Agree**.



9. In the next window, click **Install**.

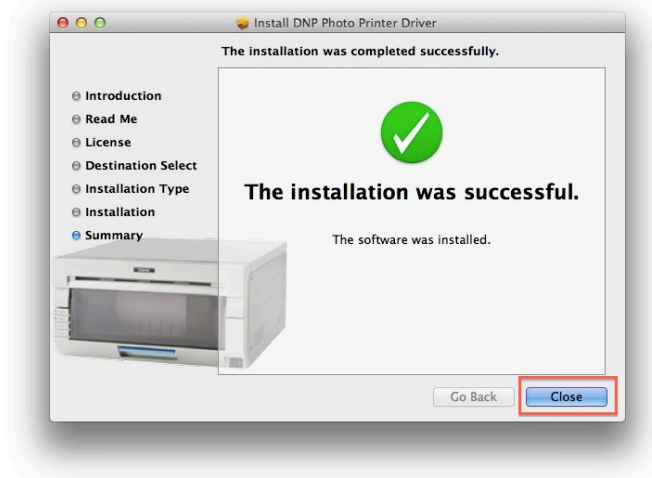


10. If your Mac operating system is password protected, enter your password when prompted. Click **OK**.



11. The installation will begin.

12. When the installation is complete you will receive the message “The Installation was successful.” Click **Close**.



You have now installed the DS Printer Drivers on a Mac operating system.

TURNING ON THE PRINTER

1. If the printer is not already plugged into the USB port, do so now.
2. Turn the printer ON.
3. The printer should be added as a device automatically in about 1 minute.



Attention

Do NOT use the + sign to add the printer. In this case, you may have another instance of the DS Series printer in the printer list.

Troubleshooting:

Make sure the printer is connected to the USB port and turned ON. The LEDs on the printer should indicate a “Ready” status. (For more information on this, consult the DS Printer User Manual.)

If the printer is added, but you cannot print:

1. Turn the printer OFF. Go to **System Preferences > Print & Scan** and delete any DS Printers listed.
2. Turn the printer ON and wait for the printer to add itself as a device again.

If the printer does not automatically add itself to the printer list, use the + sign to add it in the **System Preferences > Print & Scan** dialog box.